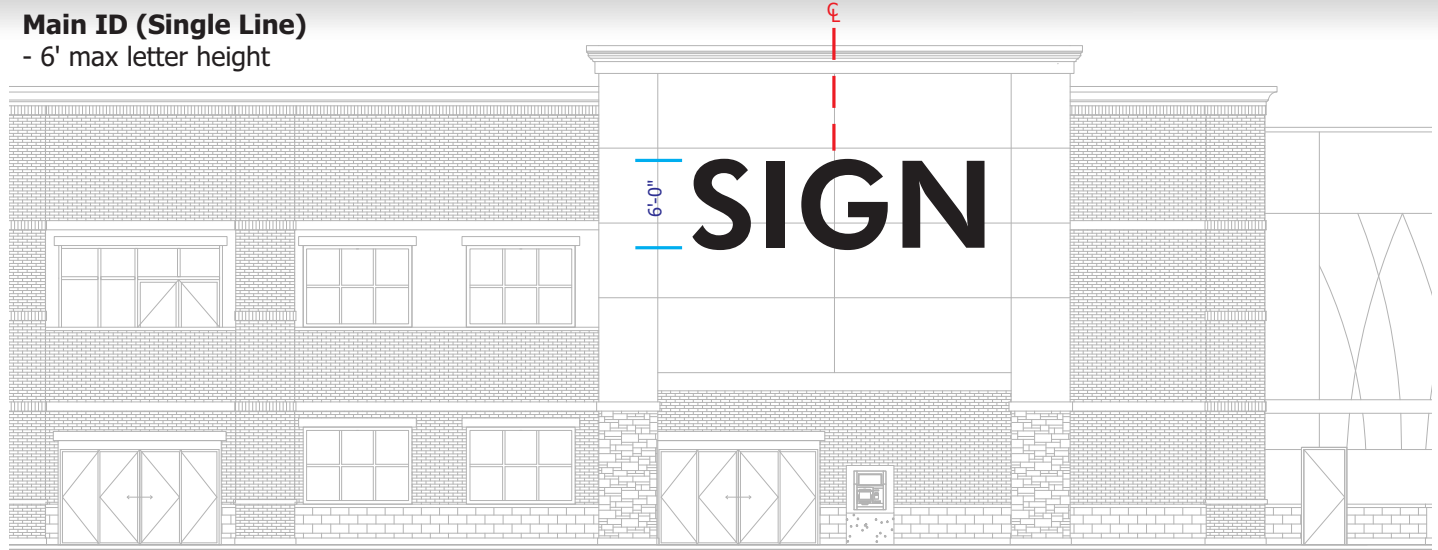
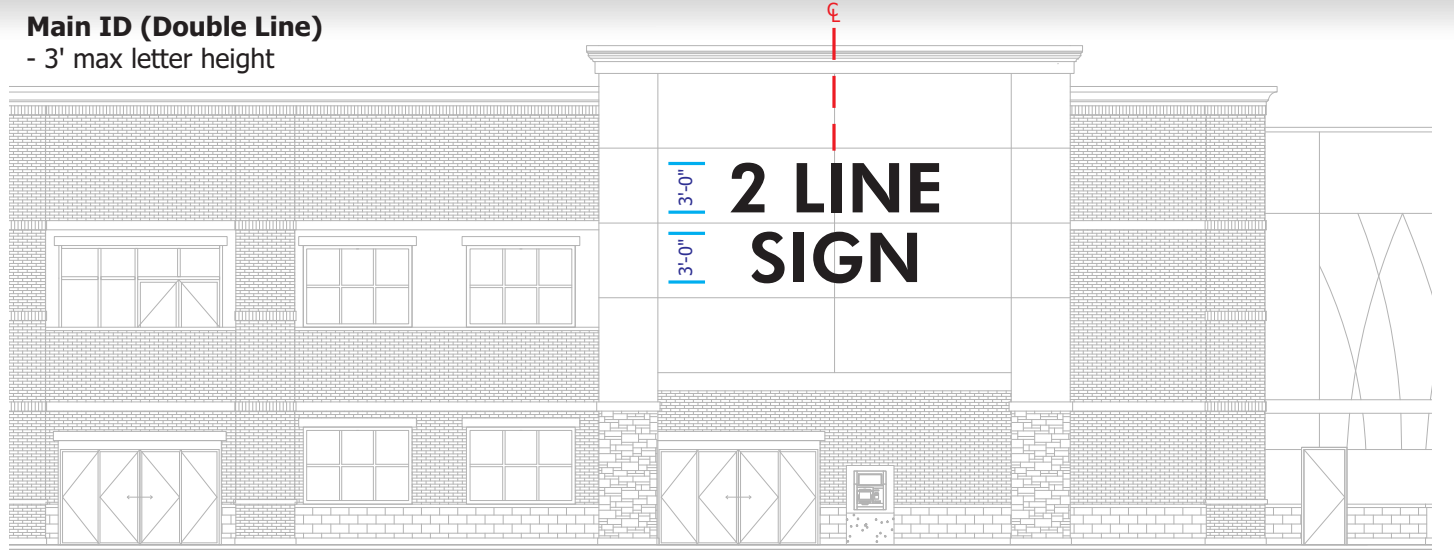


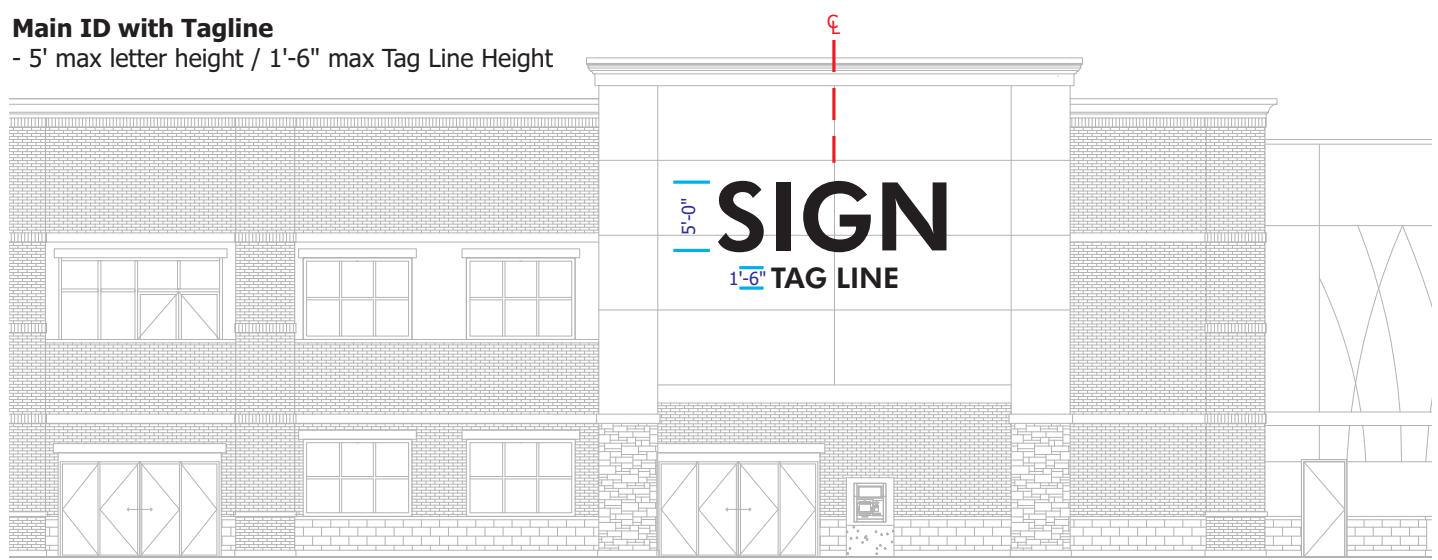
Main ID (Single Line)
- 6' max letter height



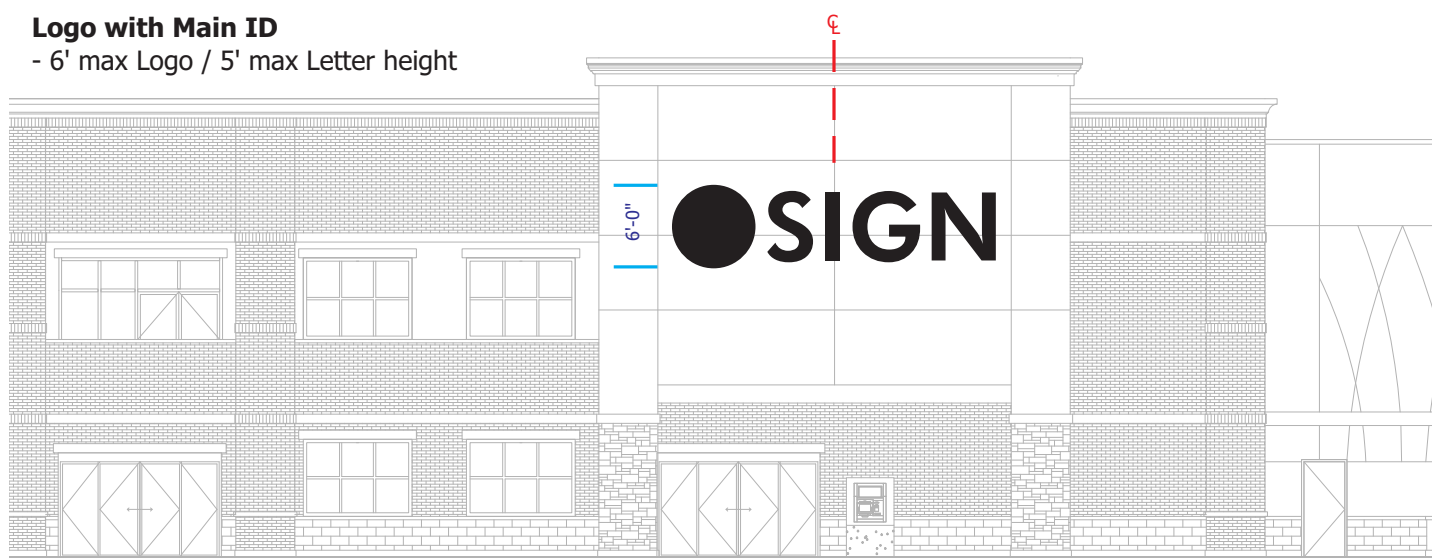
Main ID (Double Line)
- 3' max letter height



Main ID with Tagline
- 5' max letter height / 1'-6" max Tag Line Height



Logo with Main ID
- 6' max Logo / 5' max Letter height



- Anchor Tenant
- Wall sign (channel letters) are allowed 10% of the lease-space area
NOT TO EXCEED 200 square feet

- Tenants may use upper-case OR upper/lower case for their signage
- Standard colors are: black returns, black trim caps and black faces
- Other approved colors may be utilized with LL approval.
- Raceways shall be painted the same color as the façade it is attached to.

